

# State of Wyoming Corner Record

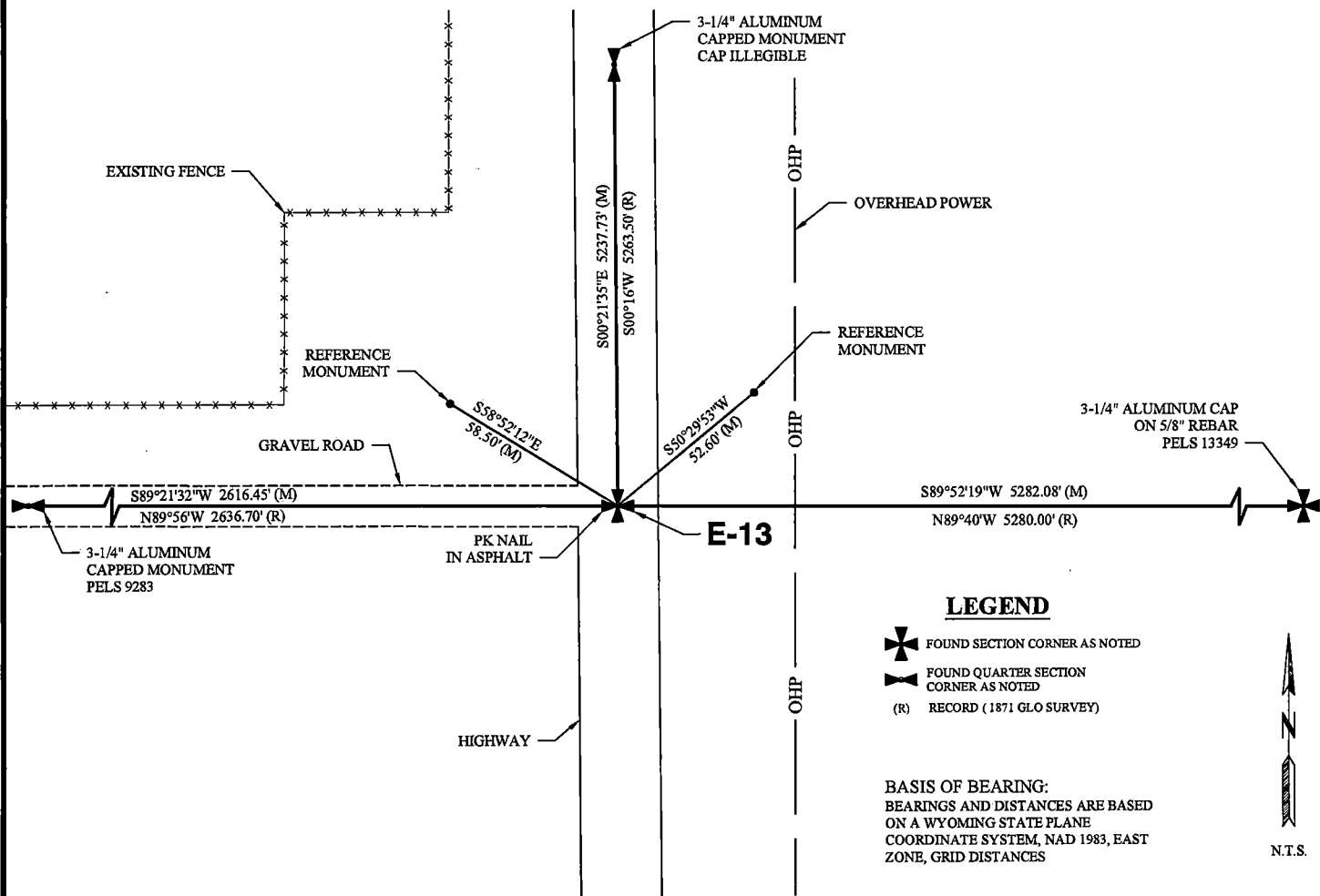
(In compliance with the CORNER PERPETUATION AND FILING ACT, Wyoming Statutes, 1997, Section 33-29-140, et seq., and the Rules and Regulations of the Board of Registration for Professional Engineers and Professional Land Surveyors)

Reverse side of this form may be used if more space is needed.

Record of original survey and citation of source of historical information (if corner is lost or obliterated.) Description of corner monumentation evidence found and/or monument and accessories established to perpetuate the location of this corner. Sketch of relative location of monument, accessories, and reference points with course and distance to adjacent corner(s) (if determined in this survey). Method and rationale for reestablishment of lost or obliterated corner.

**EVIDENCE RECORD:** 1871 GLO Survey: North between sections 9 & 10, 80.00 chains. Set lime stone 24"x20"x4" for corner to sections 3, 4, 9 & 10.

**EVIDENCE FOUND:** December 2017: Lime stone from 1871 GLO survey not found. Accepted intersection of north-south highway with gravel road extending west as best available evidence for the corner to sections 3, 4, 9 & 10. Set a PK nail in asphalt at intersection. Set 3/4" aluminum cap on a 5/8" rebar for reference monuments as shown in sketch below.



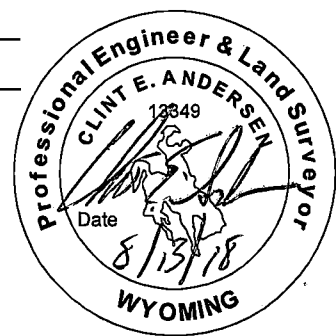
Date of Field Work: December 13, 2017 Office Reference: 2017-135

## CROSS INDEX DIAGRAM

	1	2	3	4	5	6	7	8	9	10	11	12	13	14	15	16	17	18	19	20	21	22	23	24	25
A																									
B																									
C		6																							
D			5																						
E				4																					
F					3																				
G						2																			
H							1																		
J																									
K																									
L		18																							
M			17																						
N				16																					
O					15																				
P						14																			
Q							13																		
R								12																	
S									11																
T										10															
U											9														
V												8													
W													7												
X														6											
Y															5										
Z																4									
	1	2	3	4	5	6	7	8	9	10	11	12	13	14	15	16	17	18	19	20	21	22	23	24	25

Land Surveyor / Firm / Address  
Clint E. Andersen  
WWC Engineering  
51 N. 15th Street, Suite 1  
Billings, MT 59101  
 Telephone: (406) 894-2210

This corner record was prepared by me or under my direction and supervision.  
 SEAL & SIGNATURE



Corner Name: Southwest Corner Section: 3 T 15N R 60W; 6TH P.M. Cross-Index No.: E-13  
 SBRPEPLS/PLSW: March 1994; PLSW January 1998